

Area-Wide Brownfield Planning in Vermont



Services /Expertise

Environmental Assessment and Remediation
Area-Wide Planning
Brownfields Redevelopment
Story Mapping
Data Management and Visualization

Markets

Commercial Site / Property Owners
State Government
Local Government and Regional Planning
Commissions

Project Location

Variou locations, Vermont

Date Completed

2010-present

Project Owner/Clients

Vermont Department of Environmental
Conservation (VT DEC) (Merchants Row &
St. Johnsbury)

Chittenden County Regional Planning
Commission (CCRPC) (Essex Junction &
Winooski)

Bennington County Regional
Commission (BCRC)

Town of Northfield, Central Vermont
Regional Planning Commission

Project Manager

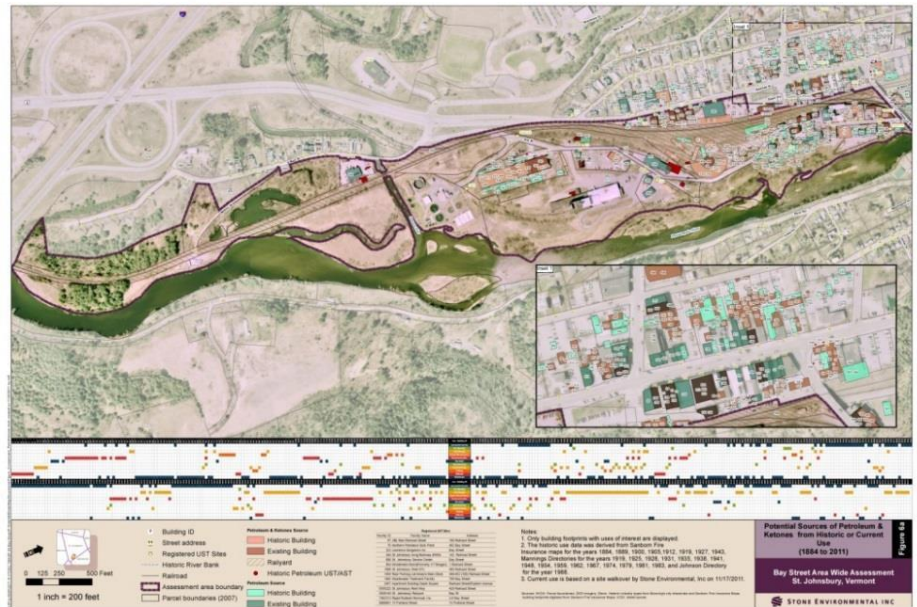
Daniel Voisin

Links to Story Maps

Please click on the following link to view the
Story Map and Area Wide Plans prepared for:

Bennington, Vermont:
<http://arcg.is/1mcFYls>

Northfield, Vermont:
<http://arcg.is/1TmR04C>



MANY downtown areas in Vermont grew as a result of natural resources (e.g. hydro-powered mills) or from transportation hubs. Often, these downtowns contain both past and current industrial uses in the proximity of commercial and residential properties. When the need for these industries waned, the communities are left as a shell of their former self. In addition to the void of vibrancy and tax revenue, industrial and commercial properties leave in their wake known and perceived contamination: bulk oil storage and rail operations in St. Johnsbury; dry cleaning and rail operations in Barre, furniture manufacturing mills in Richford; and rail and automotive fuel retailers in Essex Junction.

Past site investigations at a majority of these types of properties have been limited in both scope and areal coverage. Effective and liability-free redevelopment of each area requires a comprehensive, holistic approach to leverage past efforts, available resources for funding, and human capital.

Stone performed comprehensive, multidisciplinary research of available historical resources and environmental sources to develop a record of land use for the past 100 years for each study, utilizing the following resources:

