

PermianMAP: A Data Platform to Track Methane Emissions from Oil and Gas Drilling in the Permian Basin



Services / Expertise

Geospatial & Data Solutions
ArcGIS Application & Dashboard
Relational Database Management Systems
Web Application Development, Maintenance
Integration and Application Programming

Market

NGO/Nonprofit

Project Location

Permian Basin, Texas

Date Completed

2019-2021

Project Owner

Environmental Defense Fund

Point of Contact / Reference

Beth Trask
Environmental Defense Fund
415.293.6054
btrask@edf.org

Project ID#

19-119

Project Manager

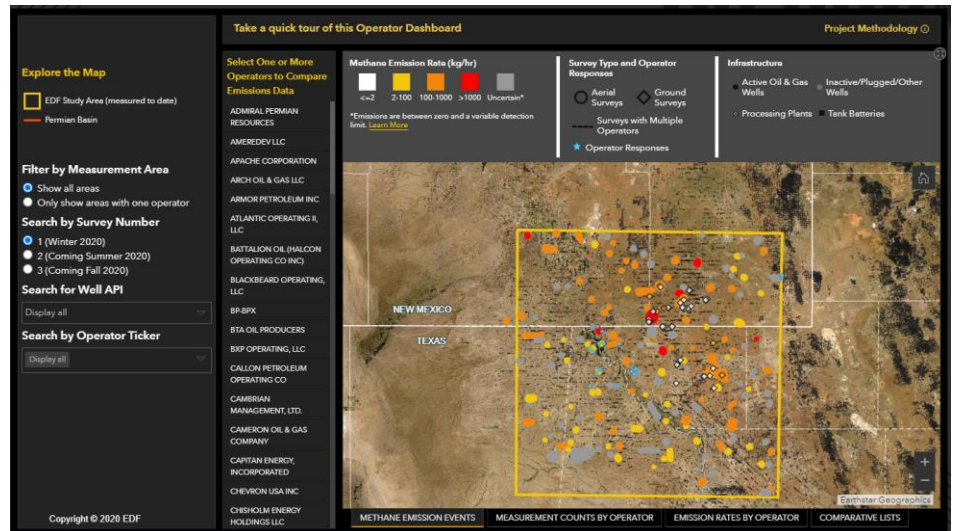
Barbara Patterson

Project Team

Nick Floersch
Heather Cox

Link to PermianMAP

<https://permianmap.org/>



Stone developed the Operator Performance dashboard as part of a larger data platform highlighting the scale of methane emissions in the Permian Basin.

STONE worked with the Environmental Defense Fund to develop an interactive online data platform to highlight the immense volumes of climate-warming methane that are being emitted in the Permian Basin, one of the largest oil and gas fields in the world. Stone's Geospatial and Data Solutions team ingested, processed and integrated data from a diverse set of scientific partners, as well as state and federal sources to create a compelling visual story emphasizing the scale of the methane problem. The platform includes multiple interactive dashboards, each with a specific purpose and target audience. In the Operator Performance Dashboard, oil and gas company technicians and regulators can filter the map of detected methane leaks by company name and/or view dynamic charts of how the selected company ranks amongst its peers in terms of methane emission rates. Stone has automated identification of responsible operators with python scripts, allowing for the platform to be quickly updated as new data becomes available.

Stone was contracted to perform the following functions:

- Project Management and Communication
- Application Design
- Data Management
- Development of a Public Facing Web Platform

This data platform was launched in April 2020 and continues to be updated during 2021 with new data collected by EDF and partners.

The full Permian Methane Analysis Project is visible [here](#).